

An aerial photograph of a river delta, showing a wide, flat expanse of land with a network of channels and distributaries. The terrain is light-colored, likely due to sediment deposition. The text "Mapping and Surveying" is overlaid in the center in a large, bold, black font.

Mapping and Surveying

Presentation by: Dr. David Groeneveld, HydroBio, Advance Remote Sensing

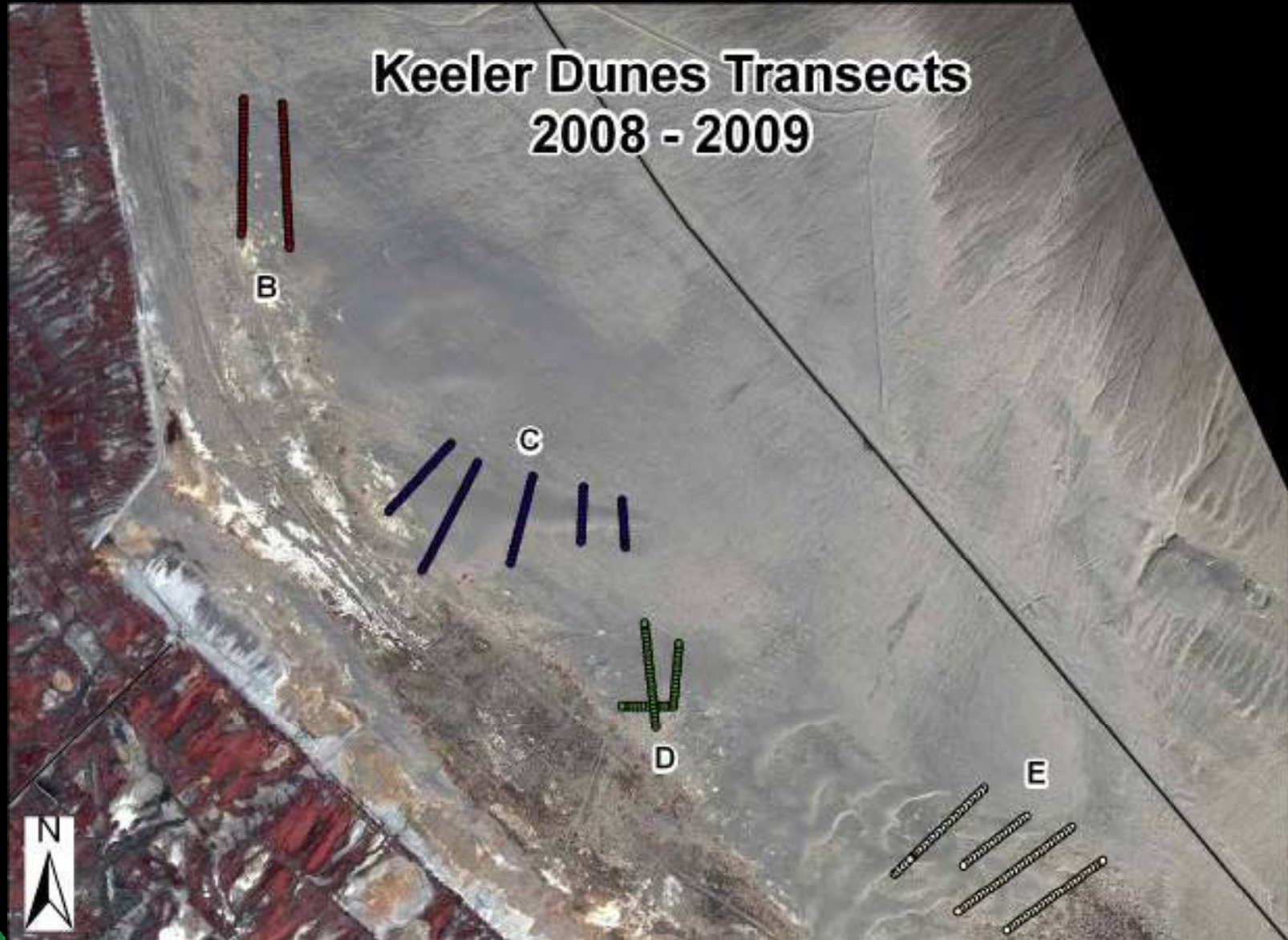
Keeler Dune Migration Analysis

January 20, 2011

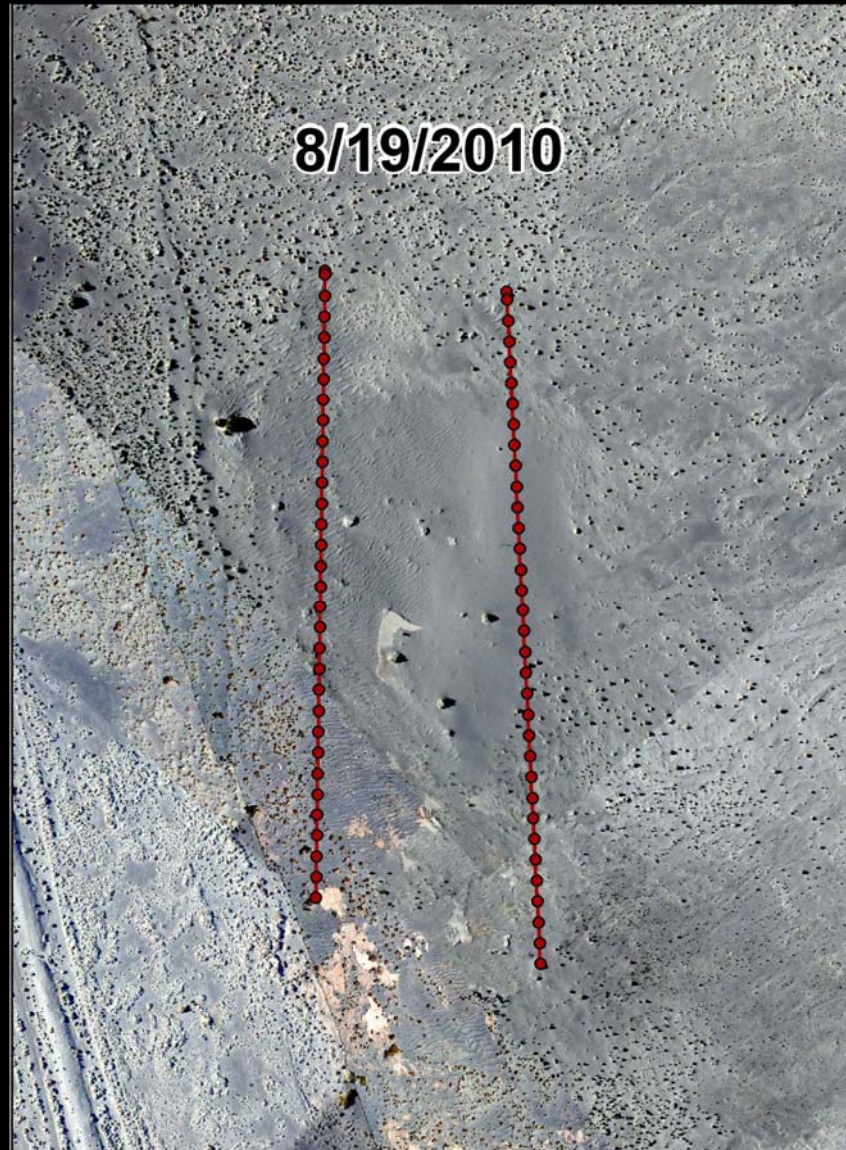


HydroBio
Advanced Remote Sensing

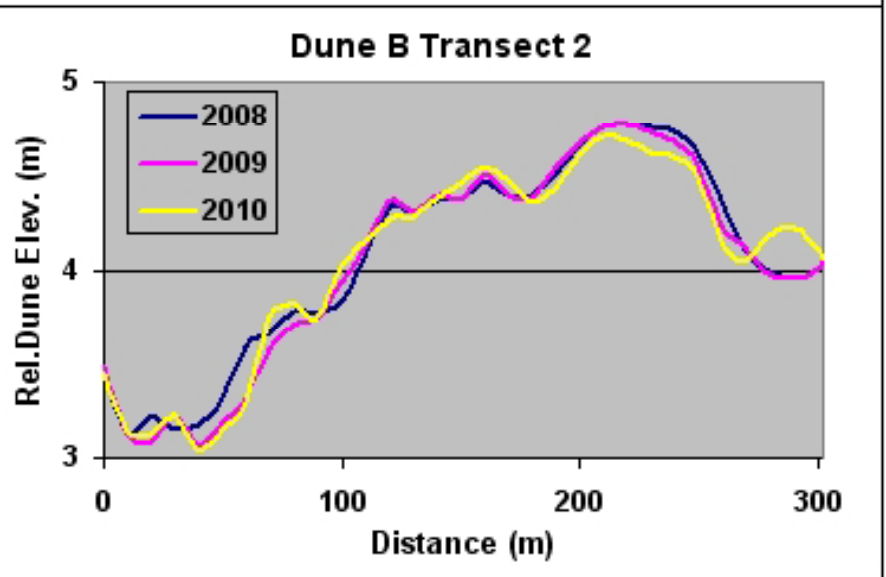
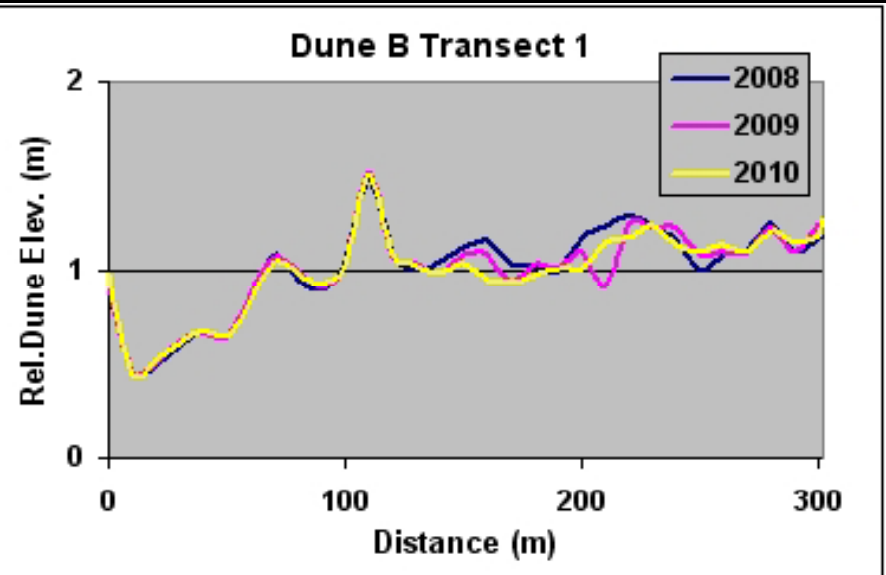
Keeler Dunes Transects 2008 - 2009



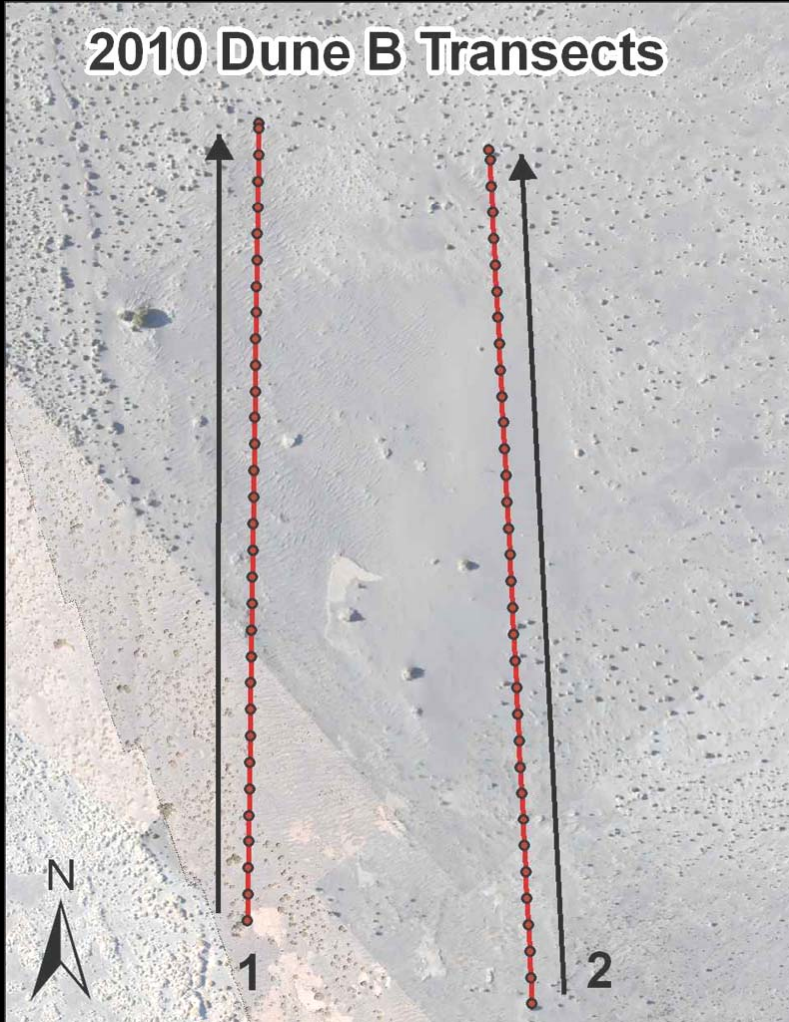
Transects B



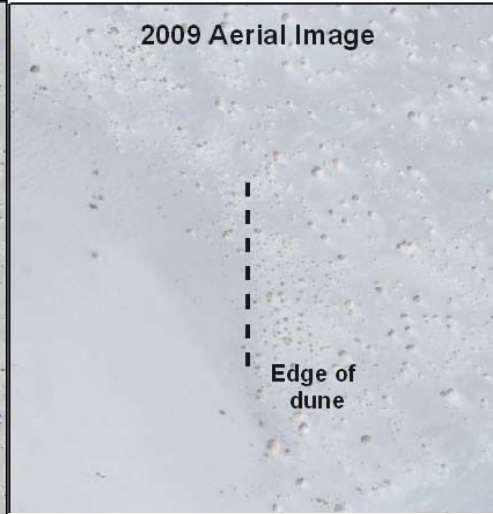
2010 Dune B Transects



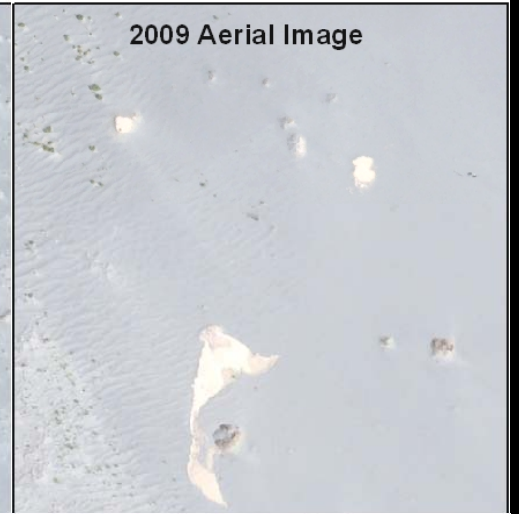
2010 Dune B Transects



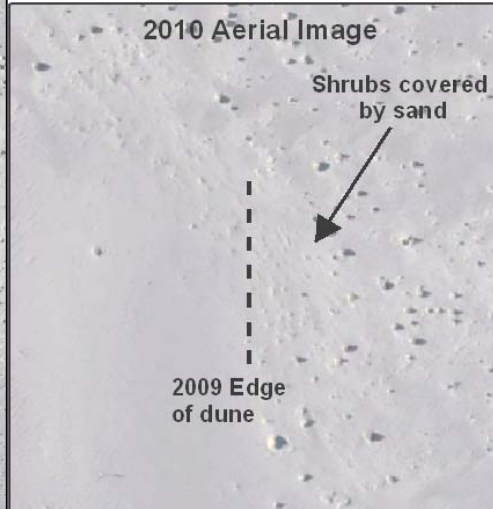
2009 Aerial Image



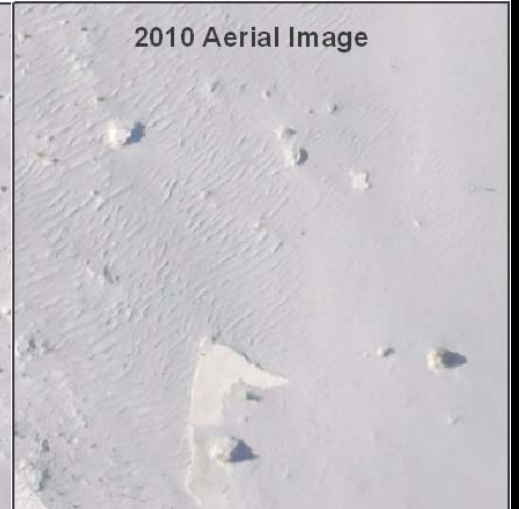
2009 Aerial Image



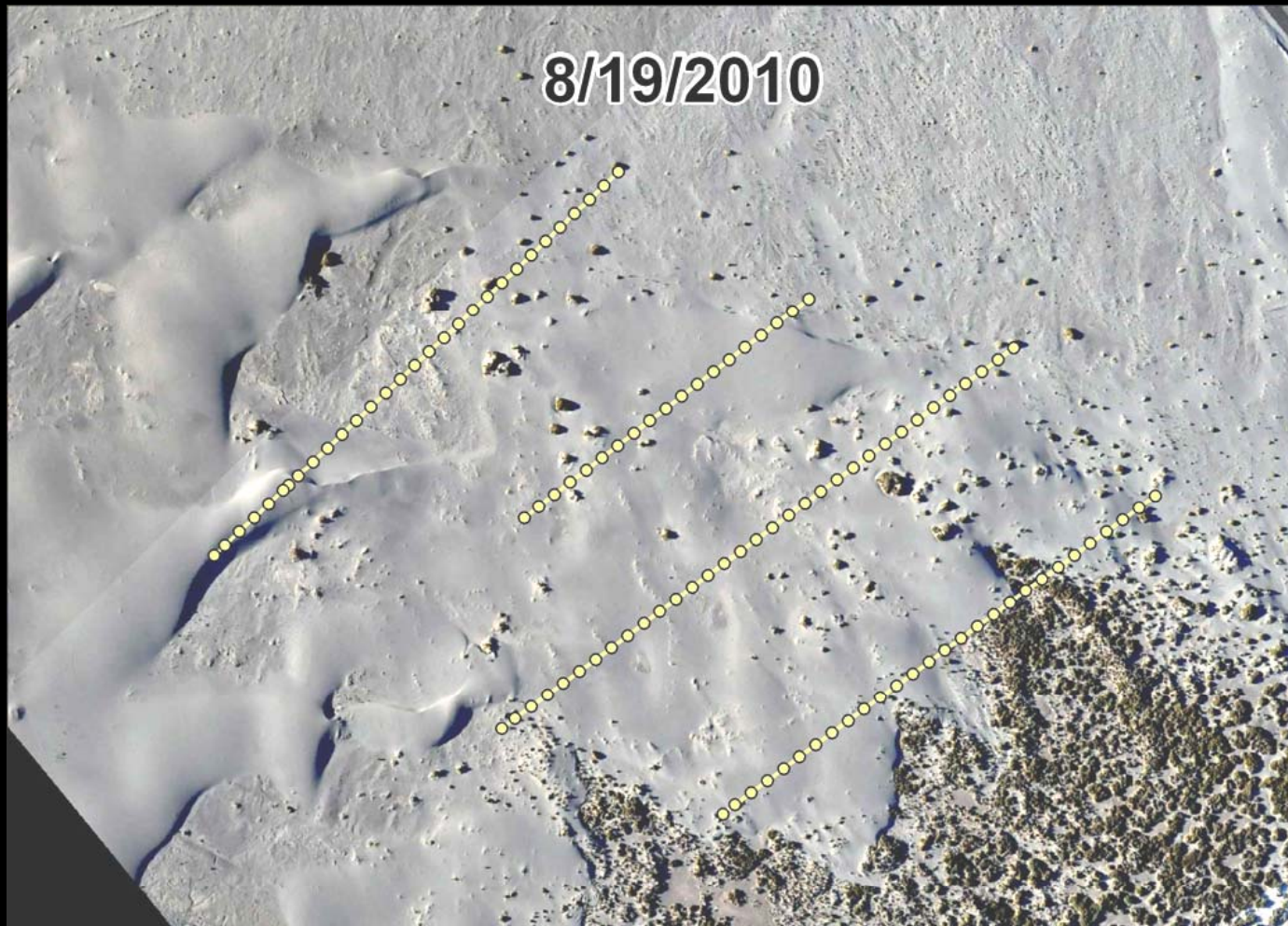
2010 Aerial Image

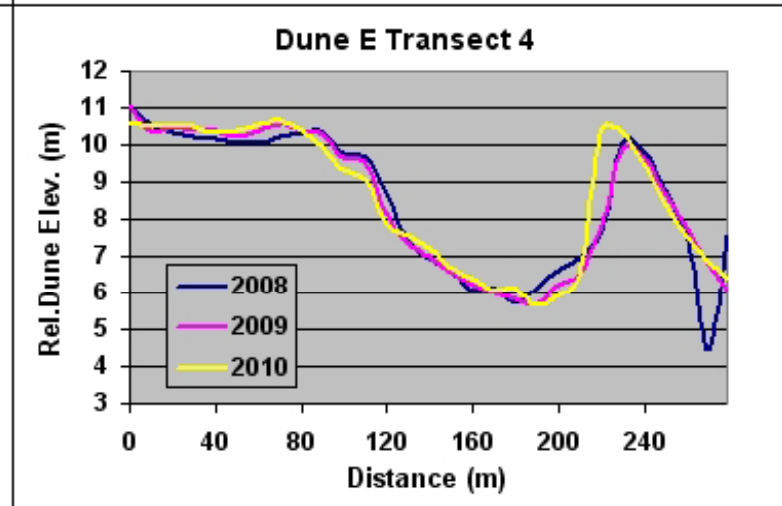
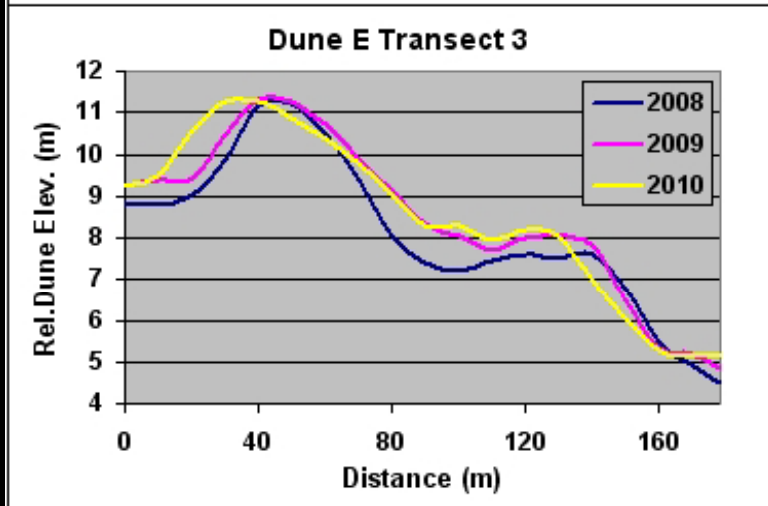
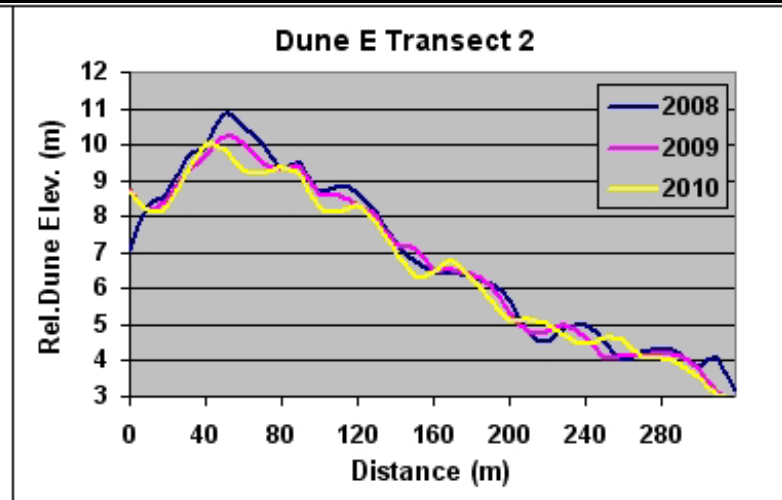
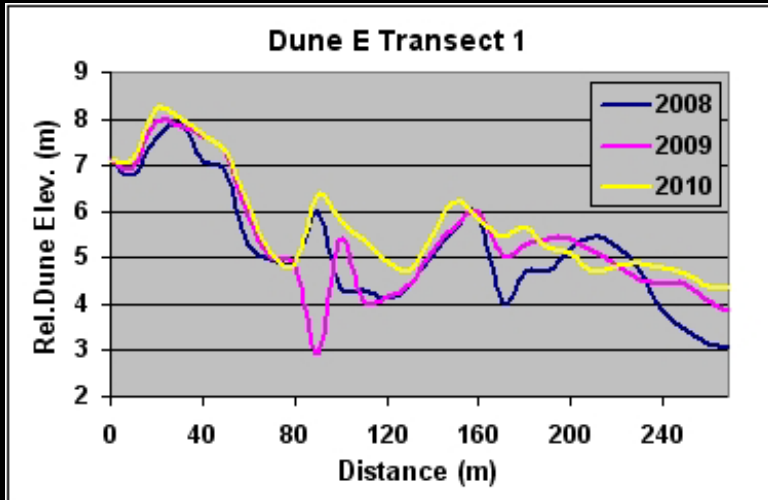


2010 Aerial Image

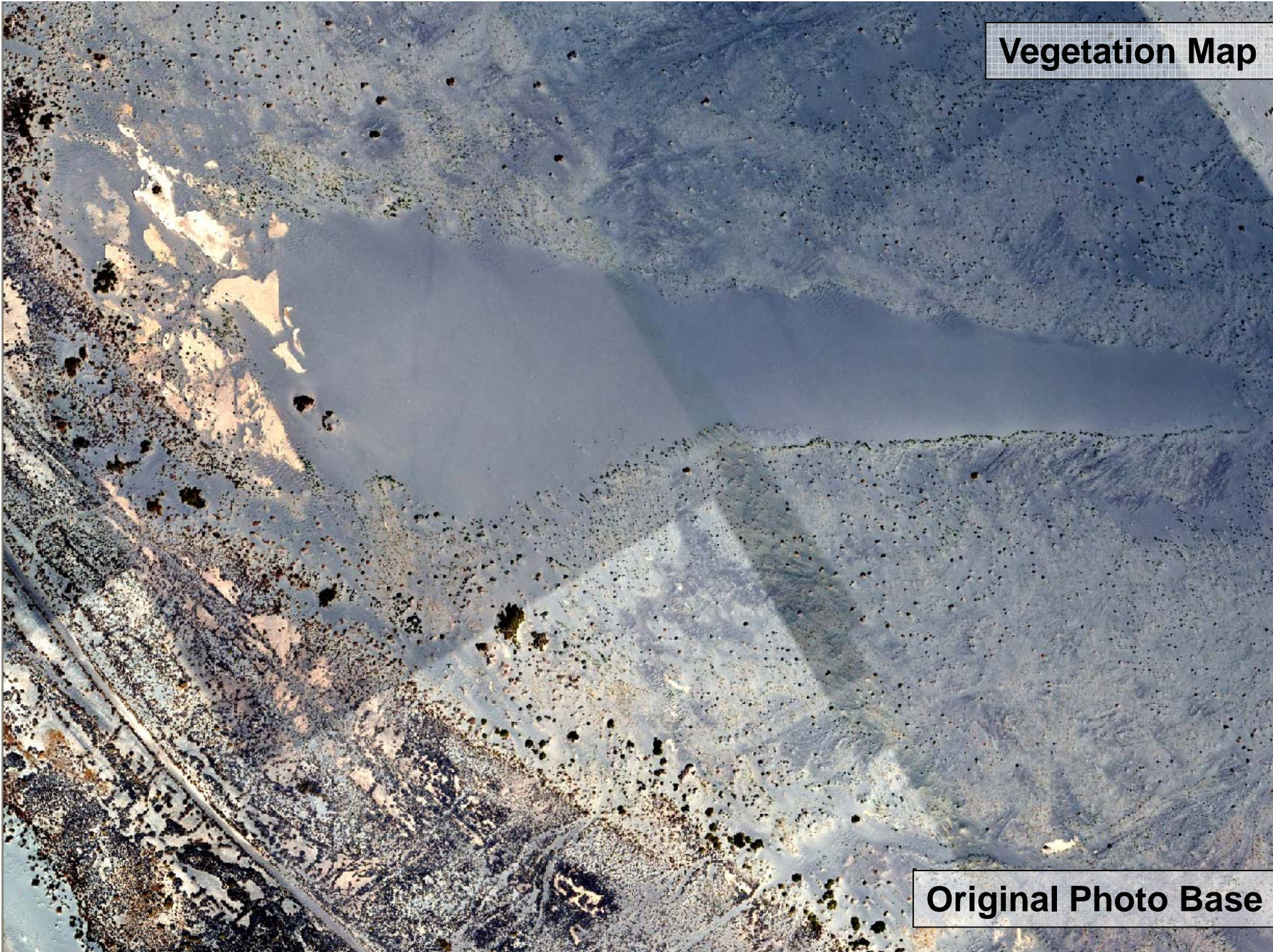


Transects E

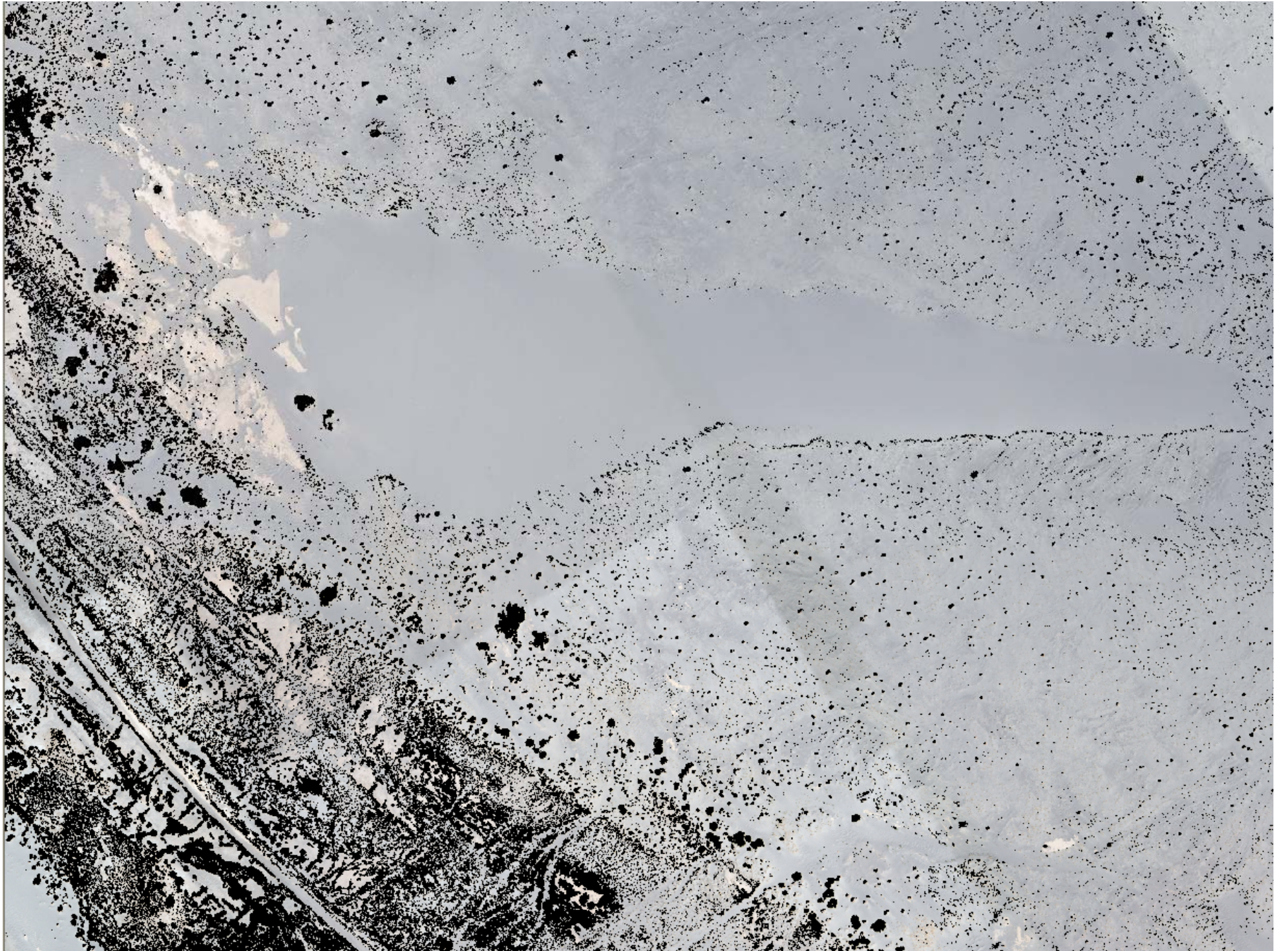


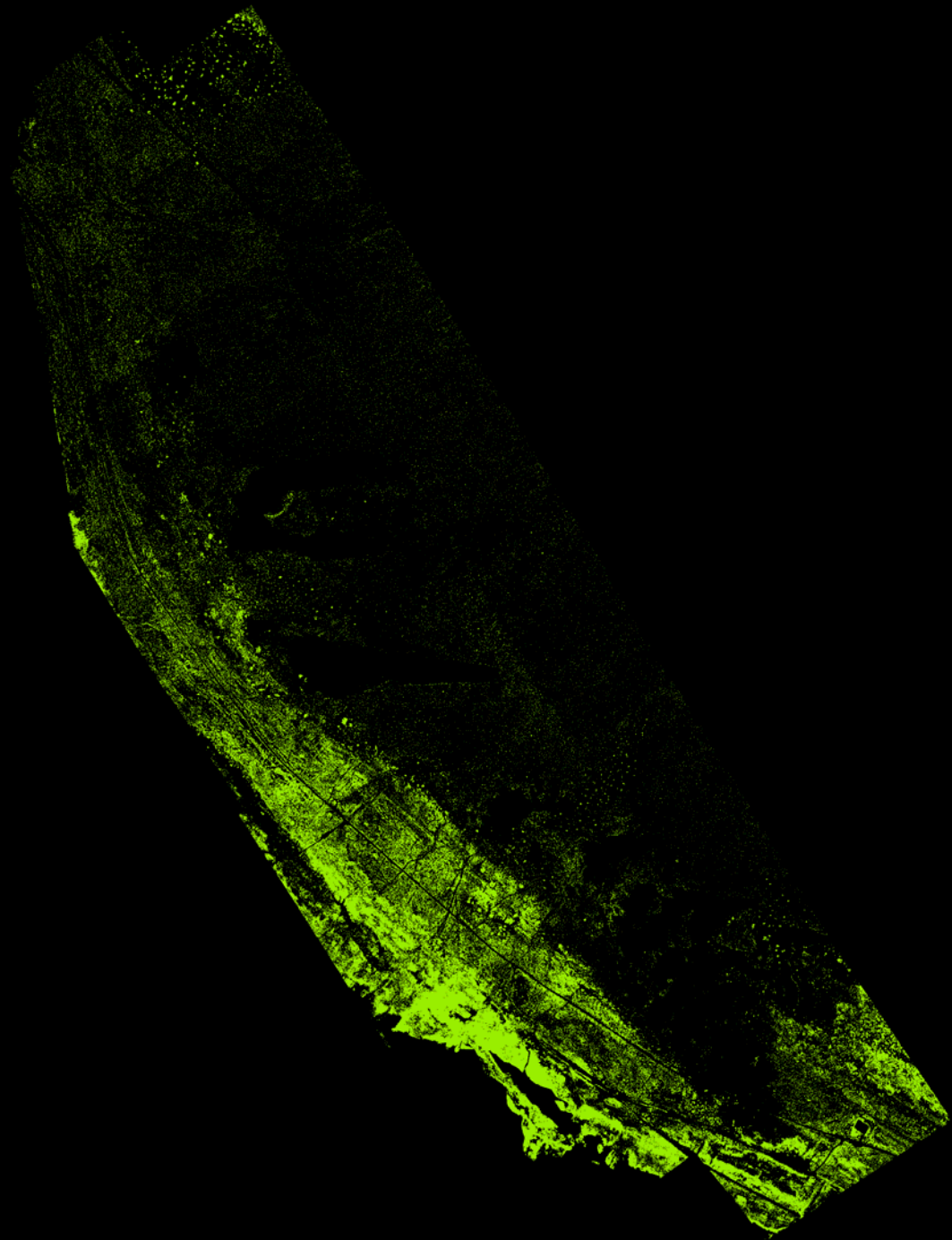


Vegetation Map



Original Photo Base





HydroBio