

Dust Control

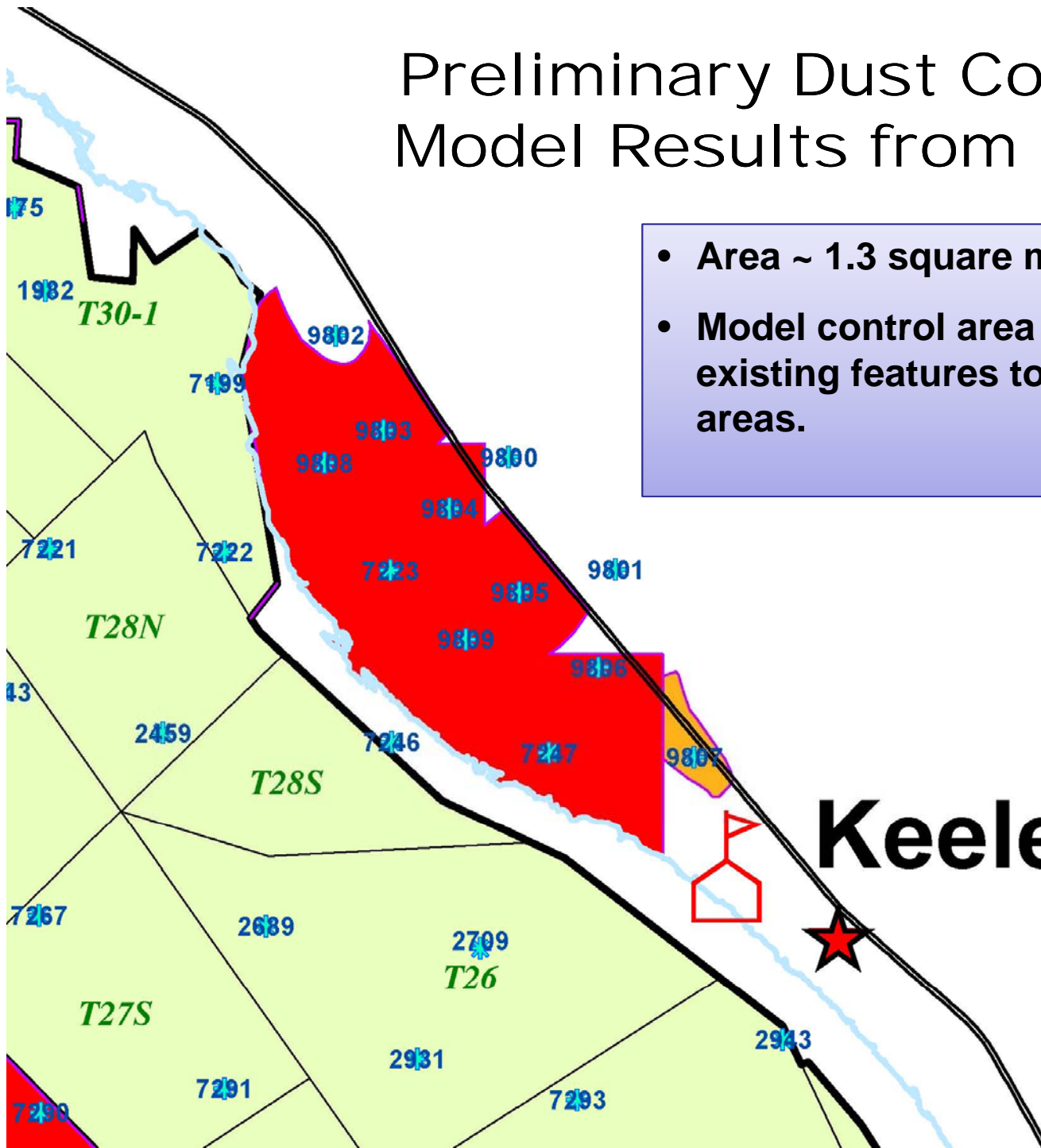
- **Control Area**
- **Dust Control Requirements**
- **Dust Control Strategy**
- **Dust Control Considerations**
- **Input from Interested Participants**

Dolomite C1

Tue, Mar 23, 2010 7:20:08 AM

Preliminary Dust Control Area Model Results from 2006-2010

- Area ~ 1.3 square miles
- Model control area will be refined based on existing features to exclude non emissive areas.



Dust Control Considerations

Land
Ownership

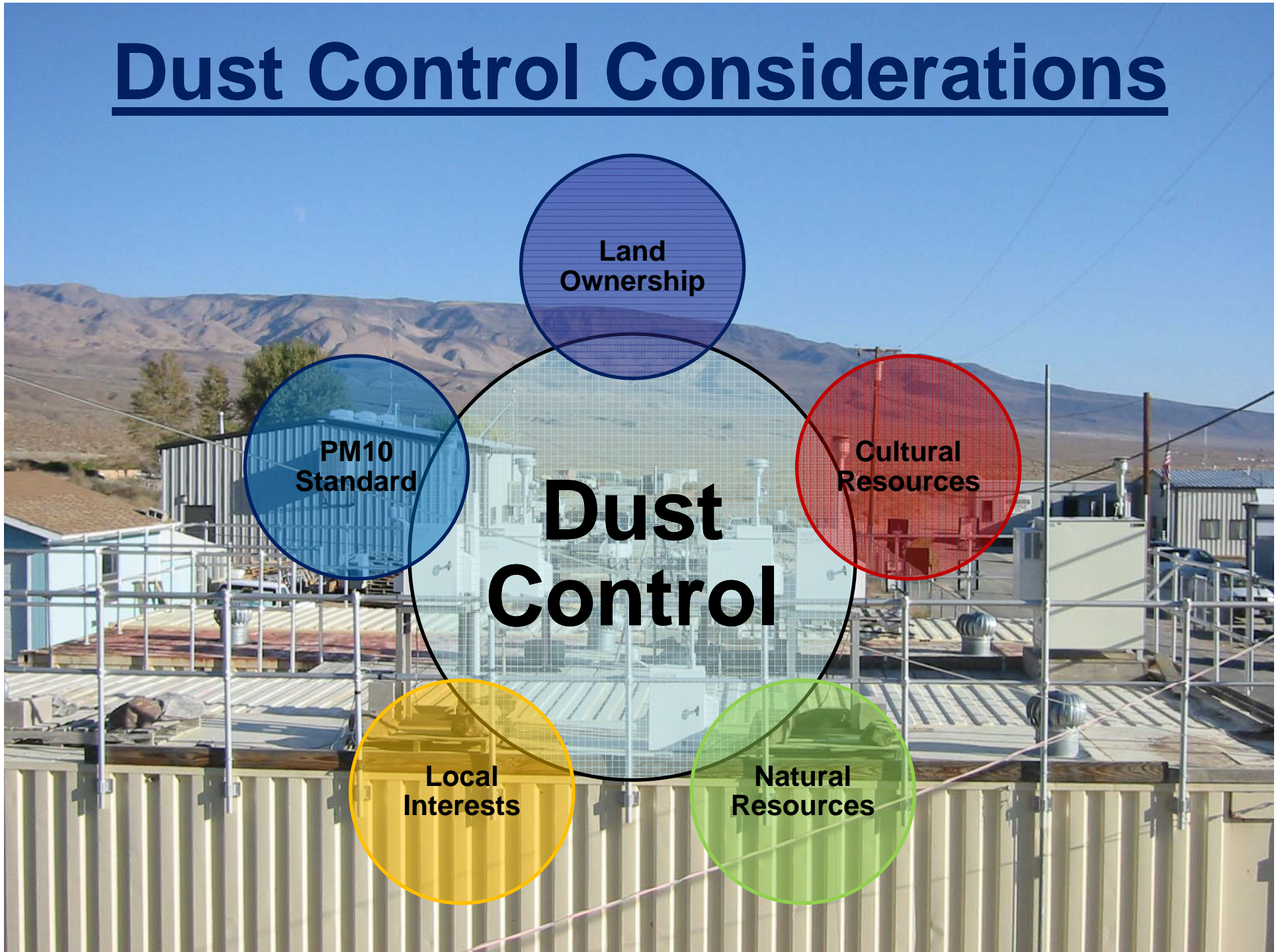
PM10
Standard

Cultural
Resources

**Dust
Control**

Local
Interests

Natural
Resources



Control Strategy

- Terrain is more complex within the dunes than on the lake bed.
 - Topography
 - Slope
- Methods of dust control used on the lake bed will have to be modified or different.
- Integrated approach that creatively combines several different methods.
 - Barriers
 - Water
 - Other ?
 - Vegetation establishment
 - Covering
- Preservation of historic and prehistoric cultural resources.
- Possible wildlife habitat.

Vision for the Future ?





Interested Agencies and Parties

- **Great Basin Unified Air Pollution Control District**
- **Bureau of Land Management (BLM)**
- **City of Los Angeles (DWP)**
- **Paiute Shoshone Native Americans**
- **Community of Keeler**
- **Inyo County**
- **Southern Pacific Railroad (?)**
- **Local Individuals**

